

PK 8500

Performance

PALFINGER CRANE



STRONG AND VERSATILE



MAXIMAL LIFTING CAPACITY

Its perfect ratio of dead weight to lifting capacity makes the PK 8500 *Performance* the yardstick for its class. High-strength fine-grained structural steel and its numerous equipment features result in precise and flexible performance even under demanding conditions. PK 8500 *Performance* – a strong partner to help you handle any job.



Return oil utilisation

The high speed of the extension system is impressive. It results from return oil utilization feature which is installed as standard, and the generously dimensioned hydraulic pipes. This makes for increased efficiency during all types of working!

Load-holding valves

They prevent the crane arm from dropping and are fitted as standard on all cylinders. The valves are positioned in such a way that they are protected from damage.



KTL – the cathodic dip painting

The shot-blasted crane parts are covered in zinc phosphate in an immersion process and coated electro-statically. The subsequent two-component top coating of paint provides a surface protection which in the past was usually only found in the automotive industry.

Electronically assured safety

The optional PALTRONIC 50 electronic control system is a real advance in safety and convenience.

Hydraulic overload safety device

Also available as an option is the hydraulic overload safety device. In the event of overloading it immediately blocks any movements which would increase the load moment.

Radio control

The optional radio control system with digital data transmission provides maximum safety and convenience. The display which is integrated in the control console informs the crane operator continuously about the current capacity status of the crane.

In combination with the radio control system, the load sensing proportional valve enables the crane to be adjusted with great sensitivity.



HIGHEST OPERATING COMFORT



Hose equipment for accessories

This option provides the oil supply for accessories. The hoses are routed in compact hose troughs and are therefore well protected.



Ergonomic crane control

The operating levers for all crane functions are arranged ergonomically on the console. This facilitates comfortable, efficient working. The control console is mounted so that it is easy to service.

Central lubrication

For all bearings in the base frame.

Internally routed oil ducts

The internally routed oil passages make it possible to have a compact design for the extension system and ensure perfect protection from damage.



Extension system

- The extension cylinders are guided by using Jordal rails and rollers.
- Optimal height compensation of the extension cylinders.



Large outrigger widths

The PK 8500 *Performance* can be fitted on any current truck chassis. Outrigger widths of 3.2 m (10' 6") or 5.6 m (18' 4") are optional.



VERSATILE EQUIPMENT

Max. lifting capacities:

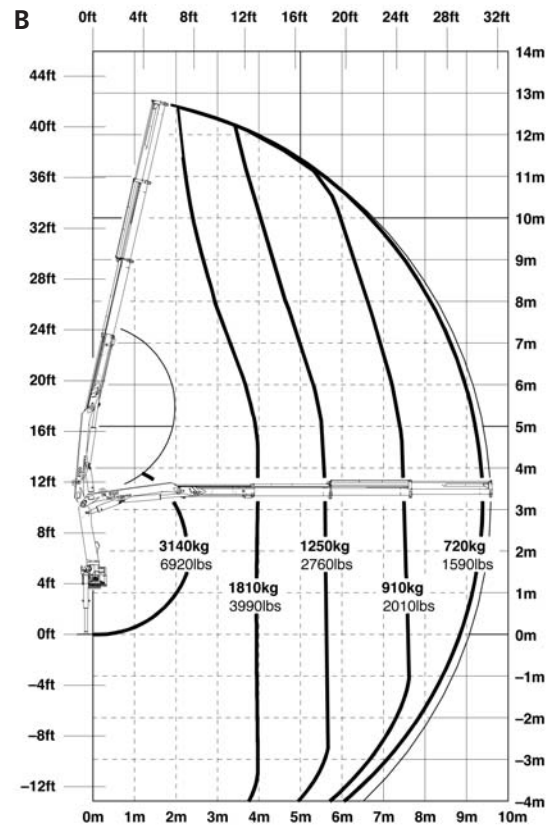
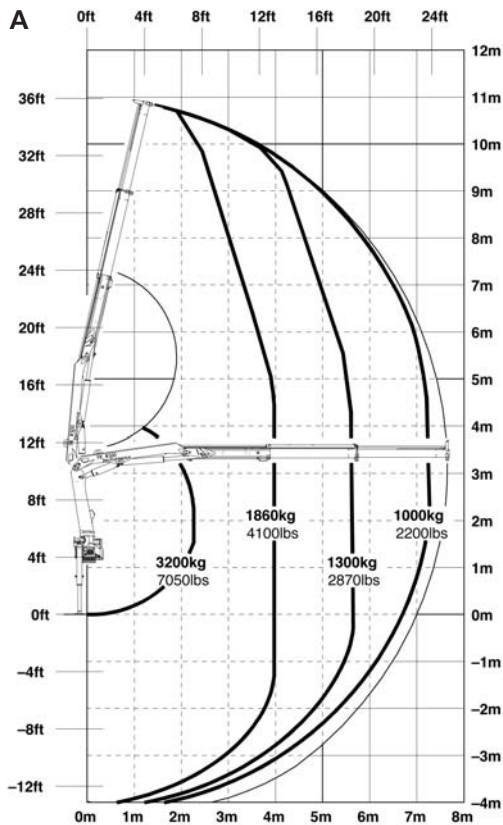
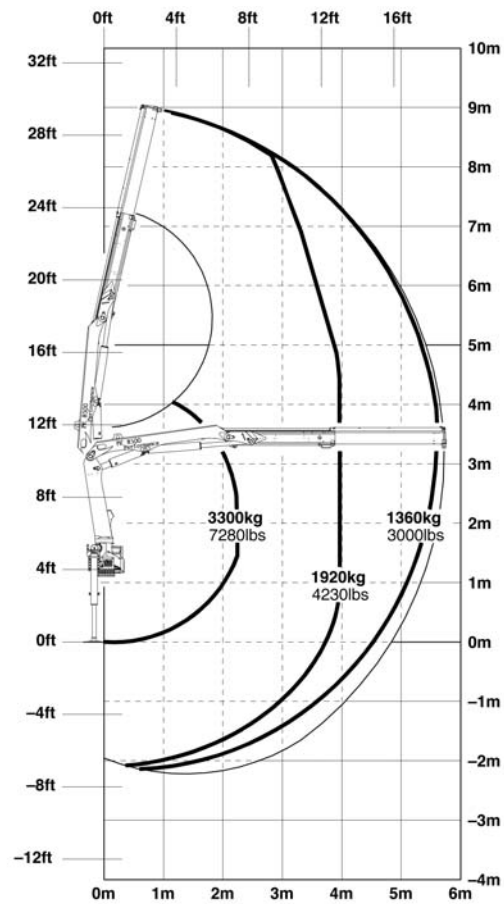
PK 8500 Performance		
Max. lifting capacities 3300kg 7280 lbs		
Outreach	Capacity	
hydraulic		
4.0 m 13' 1"	1920 kg 4230 lbs	
5.6 m 18' 4"	1360 kg 3000 lbs	

PK 8500 Performance A		
Max. lifting capacities 3200kg 7050 lbs		
Outreach	Capacity	
hydraulic		
4.0 m 13' 1"	1860 kg 4100 lbs	
5.6 m 18' 4"	1300 kg 2870 lbs	
7.5 m 24' 7"	1000 kg 2200 lbs	
manual		
9.5 m 31' 2"	740 kg 1630 lbs	
11.5 m 37' 9"	400 kg 880 lbs	
13.1 m 42' 12"	150 kg 330 lbs	

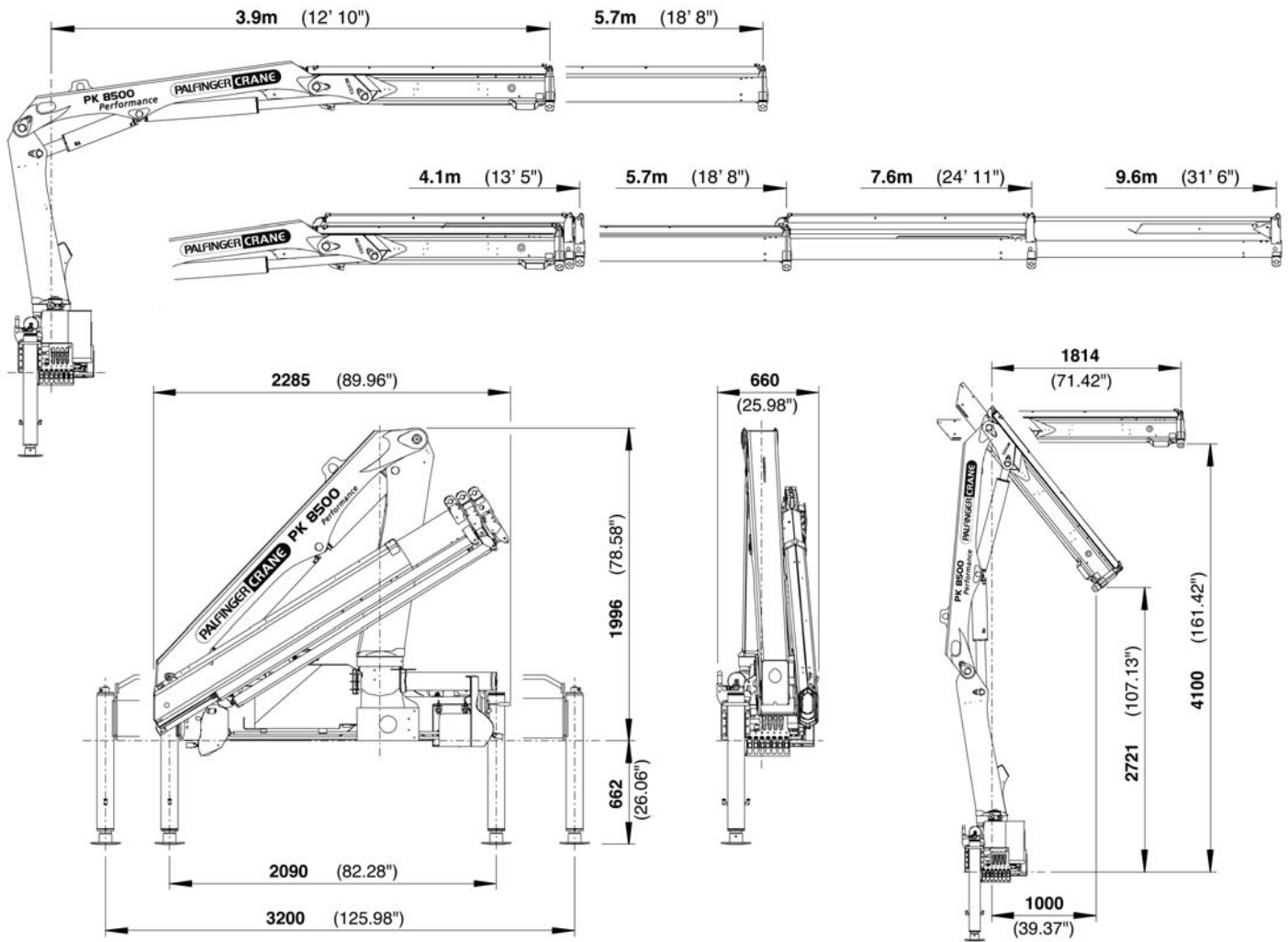
PK 8500 Performance B		
Max. lifting capacities 3140kg 6920 lbs		
Outreach	Capacity	
hydraulic		
4.0 m 13' 1"	1810 kg 3990 lbs	
5.6 m 18' 4"	1250 kg 2760 lbs	
7.5 m 24' 7"	910 kg 2010 lbs	
9.4 m 30' 10"	720 kg 1590 lbs	
manual		
11.5 m 37' 9"	400 kg 880 lbs	
13.1 m 42' 12"	150 kg 330 lbs	

The outreaches stated are with a boom angle of 20° and are therefore not the maximum.

PK 8500 Performance



PIONEERING TECHNOLOGY



PK 8500 Performance

Technical Specifications (EN 12999 H1-B3)

Max. lifting moment	7.6 mt/75.0 kNm	55300 ft.lbs
Max. lifting capacity	3300 kg/32.4 kN	7280 lbs
Max. hydraulic outreach	9.6 m	31' 6"
Slewing angle	400°	

PK 8500 Performance

Standard crane

Slewing torque	0.9 mt/9.0 kNm	6640 ft.lbs
Outreach	5.7 m	18' 8"
Stabilizer spread standard	3.2 m	10' 6"
Stabilizer spread max	5.6 m	18' 4"
Fitting space required	0.66 m	2' 2"
Width folded	2.3 m	7' 7"
Max. operating pressure	315 bar	4568 psi
Recommended pump capacity	from 25 l/min 5.5 imp.gal./min 6.6 US gal./min to 35 l/min 7.7 imp.gal./min 9.2 US gal./min	
with RC- and LS-system	from 40 l/min 8.8 imp.gal./min 10.6 US gal./min to 50 l/min 11.0 imp.gal./min 13.2 US gal./min	
Dead weight standard crane	875 kg	1930 lbs

Executions shown in the leaflet are not always corresponding to standard execution. Country-specific regulations are to be observed upon attachment.



We reserve the right to change design and specification without prior notice.

www.palfinger.com

KP-PK8500M1+E, 03/06